

V300

V350

V400

V400LT

- DC energized shakers producing 370 lbf (1.65 kN) to 1650 lbf (7.3 kN) peak force
- Choice of system configuration
- Vertical isolation mounts
- Low frequency isolation trunnions
- Rigid trunnions
- Chamber interfaces
- Air glides



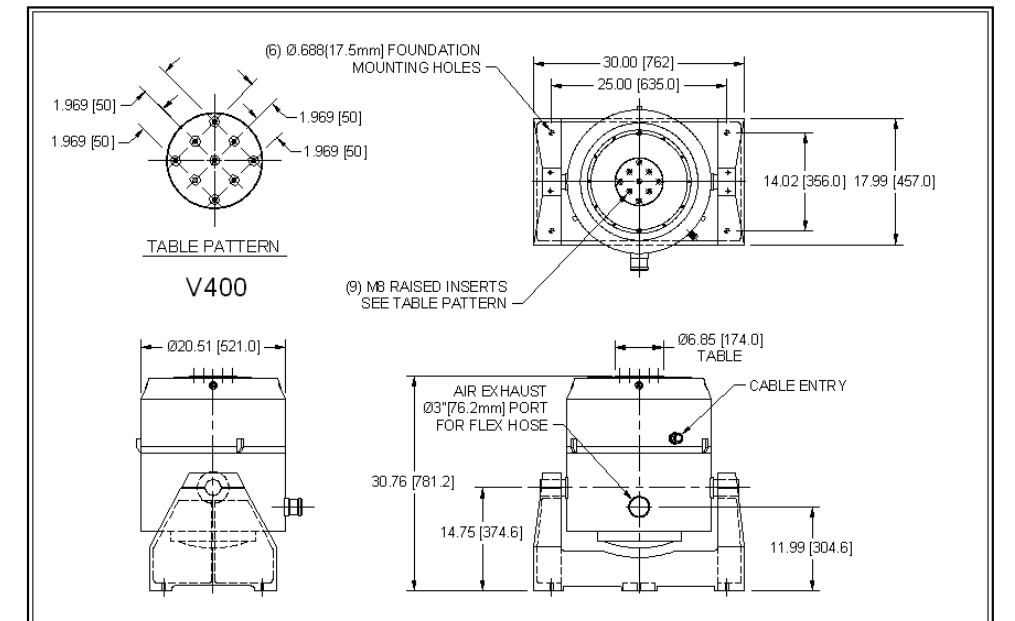
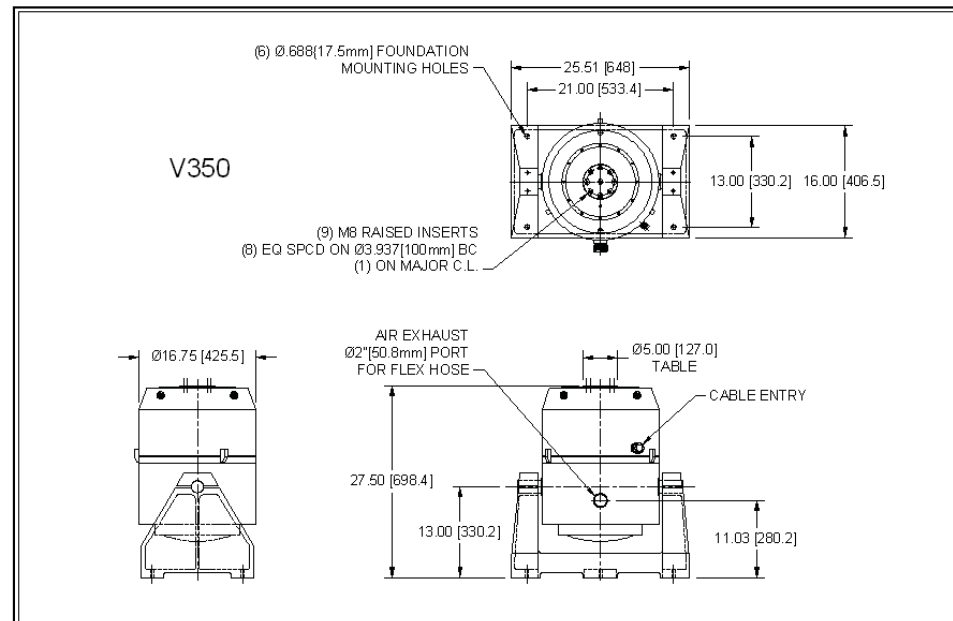
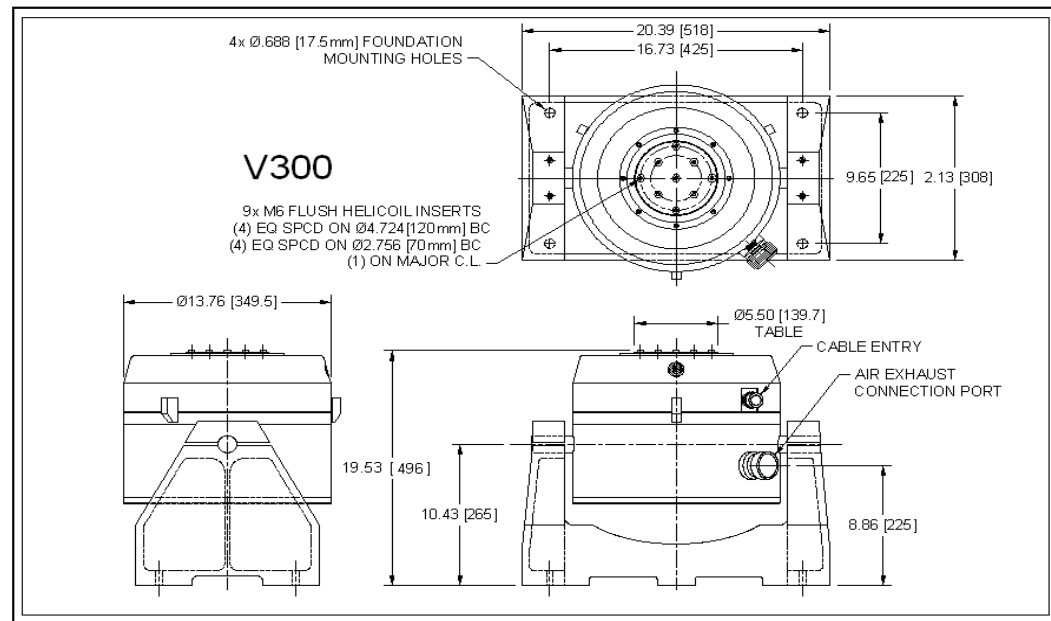
Data Physics' range of air-cooled shakers have found application testing in Formula 1 racing cars, mobile telephones, health & safety type approvals, materials analysis, avionics systems and electronic sub-systems testing. These shakers provide high lateral and torsional stiffness to provide maximum stability and support. Thus producing high performance and low distortion levels.

SignalForce
Shakers

	Maximum Sine Force			Maximum Random Force			Maximum Shock Force*			Maximum Acceleration (Sine)		Maximum Velocity		Rated Travel Peak to Peak		Armature Diameter		Armature Mass		Insert Threads		Armature Resonance $\pm 5\%$	Frequency Range		Standard Static Payload Support		Static Payload Support		Shaker Body Mass		Stray Magnetic Field @ 25 mm above table		Electrical Power Consumption
	lbf	N	kgf	lbf	N	kgf	lbf	N	kgf	g	m/s ²	ips	mps	in.	mm	in.	mm	lbs.	kg	SAE	Metric		Hz	Minimum	Maximum	lbs	kg	lbs	kg	lbs.	kg	mT	
V300/DSA1-1k	370	1646	168	191	849	87	784.5	3490	356	98	961	50	1.27	0.5	12.7	5.5	140	3.8	1.7	1/4-28	M6	4700	DC	5000	31	14	198	90	320	145	<.5	5.0	3.4
V350/DSA1-1k	535	2380	243	294	1308	133	1134.3	5046	515	72	706	35	0.9	0.8	20.3	5.0	127	7.5	3.4	5/16-24	M8	3500	DC	4000	40	18	251	114	686	311	<.5	5.0	4.3
V350/DSA1-2k	697	3100	316	504	2240	228	1477.4	6572	670	93	912	50	1.27	1.0	25.4	5.0	127	7.5	3.4	5/16-24	M8	3500	DC	4000	40	18	251	114	686	311	<.5	5.0	6.8
V400HG/DSA1-2k	1034	4600	469	575	2558	261	2192.3	9752	994	90	881	32	0.81	1.0	25.4	6.9	174.5	11.5	5.2	5/16-24	M8	2900	DC	3000	88	40	353	160	1402	636	<.5	5.0	7.3
V400HG/DSA4-4k	1349	6000	612	877	3900	398	2859.6	12720	1297	117	1149	50	1.27	1.0	25.4	6.9	174.5	11.5	5.2	5/16-24	M8	2900	DC	3000	88	40	353	160	1402	636	<.5	5.0	10.1
V400HG/DSA4-8k	1647	7326	747	933	4150	423	3491.5	15531	1584	140	1373	60	1.52	1.0	25.4	6.9	174.5	11.5	5.2	5/16-24	M8	2900	DC	3000	88	40	353	160	1402	636	<.5	5.0	11.7
V400LT/DSA1-2k	1034	4600	469	575	2558	261	2192.3	9752	994	57	562	32	0.81	1.0	25.4	13.1	333	18.0	8.2	5/16-24	M8	2800	DC	3000	88	40	353	160	1402	636	<.5	5.0	7.3
V400LT/DSA4-4k	1349	6000	612	877	3900	398	2859.6	12720	1297	75	733	50	1.27	1.0	25.4	13.1	333	18.0	8.2	5/16-24	M8	2800	DC	3000	88	40	353	160	1402	636	<.5	5.0	10.1
V400LT/DSA4-8k	1647	7326	747	933	4150	423	3491.5	15531	1584	91	896	60	1.52	1.0	25.4	13.1	333	18.0	8.2	5/16-24	M8	2800	DC	3000	88	40	353	160	1402	636	<.5	5.0	11.7

*Note- At 3 mSec

SignalForce



Options

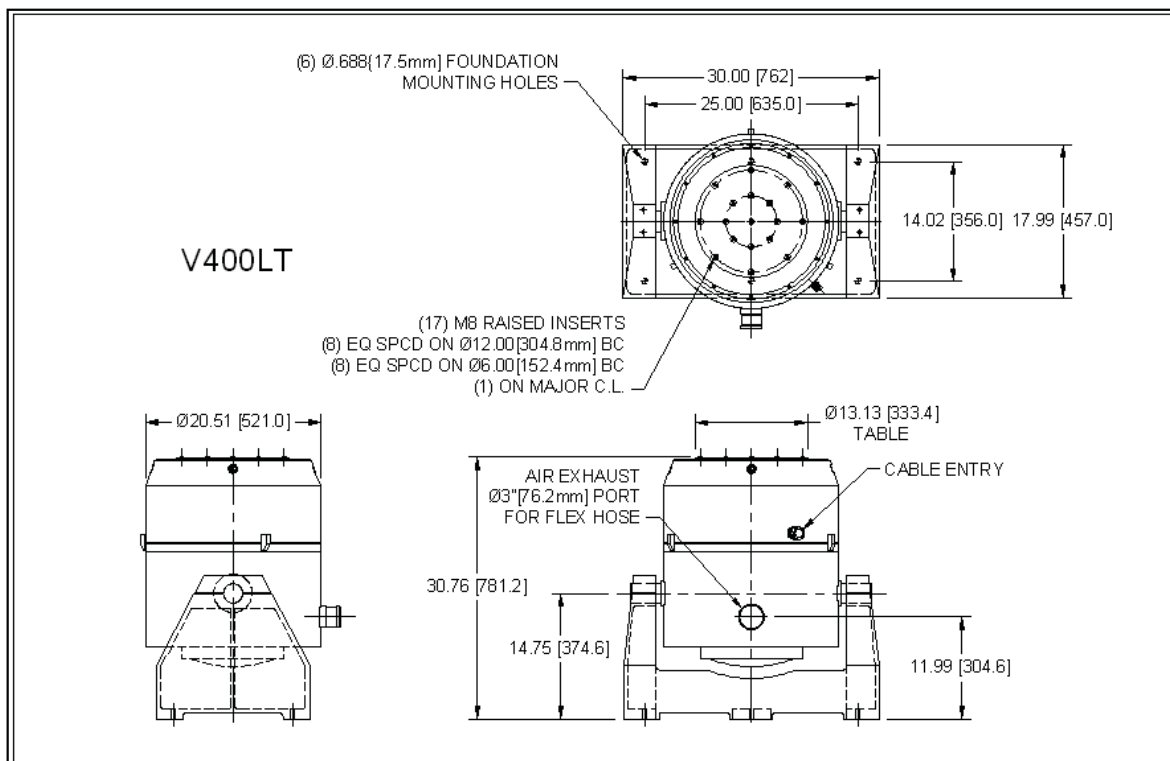
- Pneumatic isolation mounts with resonance <5Hz
- Rigid trunnions
- Isolated trunnions for horizontal and vertical operation
- Degaussing to reduce stray field
- Air glides for use with chambers

Head expanders

Thermal barriers

Armature Insert Details

- V300: 1 centre, 4 on 70mm PCD, 4 on 120mm PCD
- V350: 1 centre, 8 on 100mm PCD,
- V400: 9 on 50mm grid
- V400LT: 1 centre, 8 on 152.4mm PCD, 8 on 304.8mm PCD



Discover more at www.dataphysics.com

Data Physics Corporation

1741 Technology Drive, Suite 260, San Jose, CA 95110
TEL: (408) 437-0100 FAX: (408) 437-0509

